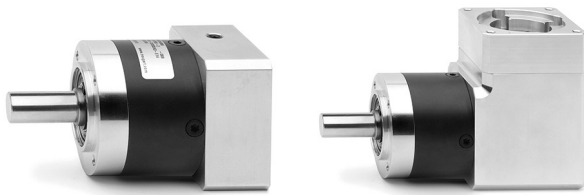


Réducteur planétaire Série GB

Tailles disponibles : 40, 60, 80, 120

RÉDUCTEUR PLANÉTAIRE SÉRIE GB



Les réducteurs planétaires de la série GB, au moyen d'un système d'engrenage planétaire, permettent la réduction de la vitesse angulaire et l'augmentation du couple transmissible. Ces réducteurs de vitesses peuvent être utilisés avec les axes séries 5E et 5V et avec le vérins série 6E.

Disponibles en 4 tailles et 4 rapports différents de réduction, les réducteurs planétaires Série GB peuvent être fournis en configuration linéaire ou angulaire. Tous les réducteurs sont fournis avec brides d'interface pour la connexion des moteurs camozzi Séries MTB et MTS.

- » Jeu réduit
- » Conçu pour être connecter aux moteurs Série MTB et MTS
- » Performances élevées
- » 4 rapports de réduction disponibles ($i=3,5,7,10$)
- » Fonctionnement silencieux
- » Position de montage au choix
- » Lubrification à vie
- » Disponible en configuration linéaire ou angulaire

CODIFICATION

| | | | | | | | | |
|-----------|---|------------|---|-----------|---|----------|---|-------------|
| GB | - | 040 | - | 03 | - | D | - | 0100 |
|-----------|---|------------|---|-----------|---|----------|---|-------------|

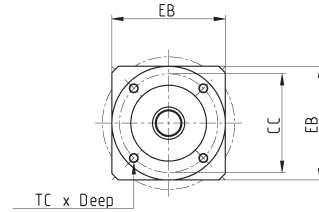
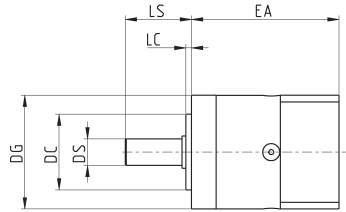
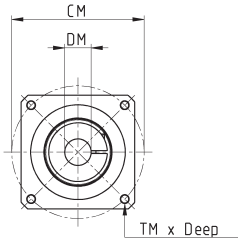
| | |
|-------------|---|
| GB | REDUCTEUR |
| 040 | TAILLE : 040 = Ø40 060 = Ø60 080 = Ø80 120 = Ø120 |
| 03 | RAPPORT DE REDUCTION : 03 i = 3 05 i = 5 07 i = 7 10 i = 10 |
| D | TYPE : D = linéaire A = angulaire |
| 0100 | TYPE DU MOTEUR : 0100 = Brushless 100W (taille 040 seulement) 0400 = Brushless 400W (taille 060 seulement) 0750 = Brushless 750W (taille 080 seulement) 1000 = Brushless 1000W (taille 120 seulement) 0024 = Nema 24 |

RÉDUCTEUR PLANÉTAIRE SÉRIE GB

REDUCTEUR PLANETAIRE EN LIGNE

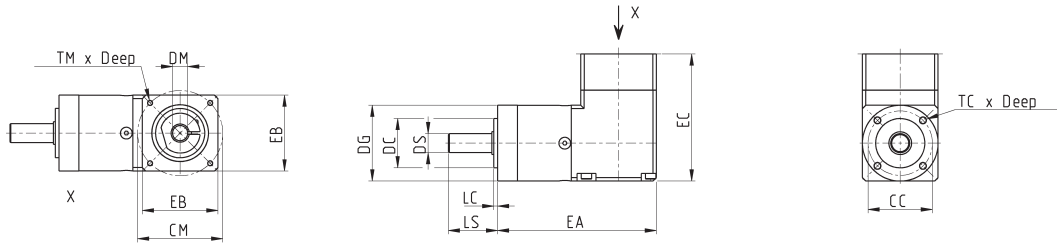


REDUCTEUR PLANETAIRE SERIE GB



| Mod. | RECU | $\varnothing_{DS}^{(h7)}$ | LS | $\varnothing_{DC}^{(h7)}$ | LC | \varnothing_{CC} | | EA | EB | \varnothing_{DG} | \varnothing_{DM} | \varnothing_{CM} | TM x Prof. | Poid (Kg) |
|------------------|------|---------------------------|----|---------------------------|----|--------------------|----------|-------|-----|--------------------|--------------------|--------------------|------------|-----------|
| GB-040-03-D-0100 | <15' | 10 | 26 | 26 | 2 | 34 | M4 x 6 | 67.5 | 40 | 40 | 8 | 45 | M3 x 8 | 0.35 |
| GB-040-05-D-0100 | <15' | 10 | 26 | 26 | 2 | 34 | M4 x 6 | 67.5 | 40 | 40 | 8 | 45 | M3 x 8 | 0.35 |
| GB-040-07-D-0100 | <15' | 10 | 26 | 26 | 2 | 34 | M4 x 6 | 67.5 | 40 | 40 | 8 | 45 | M3 x 8 | 0.35 |
| GB-040-10-D-0100 | <15' | 10 | 26 | 26 | 2 | 34 | M4 x 6 | 67.5 | 40 | 40 | 8 | 45 | M3 x 8 | 0.35 |
| GB-040-03-D-0024 | <15' | 10 | 26 | 26 | 2 | 34 | M4 x 6 | 63.5 | 60 | 40 | 8 | 66.7 | M4 x 10 | 0.35 |
| GB-040-05-D-0024 | <15' | 10 | 26 | 26 | 2 | 34 | M4 x 6 | 63.5 | 60 | 40 | 8 | 66.7 | M4 x 10 | 0.35 |
| GB-040-07-D-0024 | <15' | 10 | 26 | 26 | 2 | 34 | M4 x 6 | 63.5 | 60 | 40 | 8 | 66.7 | M4 x 10 | 0.35 |
| GB-040-10-D-0024 | <15' | 10 | 26 | 26 | 2 | 34 | M4 x 6 | 63.5 | 60 | 40 | 8 | 66.7 | M4 x 10 | 0.35 |
| GB-060-03-D-0400 | <10' | 14 | 35 | 40 | 3 | 52 | M5 x 8 | 78 | 60 | 60 | 14 | 70 | M5 x 12 | 0.9 |
| GB-060-05-D-0400 | <10' | 14 | 35 | 40 | 3 | 52 | M5 x 8 | 78 | 60 | 60 | 14 | 70 | M5 x 12 | 0.9 |
| GB-060-07-D-0400 | <10' | 14 | 35 | 40 | 3 | 52 | M5 x 8 | 78 | 60 | 60 | 14 | 70 | M5 x 12 | 0.9 |
| GB-060-10-D-0400 | <10' | 14 | 35 | 40 | 3 | 52 | M5 x 8 | 78 | 60 | 60 | 14 | 70 | M5 x 12 | 0.9 |
| GB-060-03-D-0024 | <10' | 14 | 35 | 40 | 3 | 52 | M5 x 8 | 71 | 60 | 60 | 8 | 66.7 | M4 x 10 | 0.9 |
| GB-060-05-D-0024 | <10' | 14 | 35 | 40 | 3 | 52 | M5 x 8 | 71 | 60 | 60 | 8 | 66.7 | M4 x 10 | 0.9 |
| GB-060-07-D-0024 | <10' | 14 | 35 | 40 | 3 | 52 | M5 x 8 | 71 | 60 | 60 | 8 | 66.7 | M4 x 10 | 0.9 |
| GB-060-10-D-0024 | <10' | 14 | 35 | 40 | 3 | 52 | M5 x 8 | 71 | 60 | 60 | 8 | 66.7 | M4 x 10 | 0.9 |
| GB-080-03-D-0750 | <7' | 20 | 40 | 60 | 3 | 70 | M6 x 10 | 103.5 | 80 | 80 | 19 | 90 | M6 x 15 | 2.1 |
| GB-080-05-D-0750 | <7' | 20 | 40 | 60 | 3 | 70 | M6 x 10 | 103.5 | 80 | 80 | 19 | 90 | M6 x 15 | 2.1 |
| GB-080-07-D-0750 | <7' | 20 | 40 | 60 | 3 | 70 | M6 x 10 | 103.5 | 80 | 80 | 19 | 90 | M6 x 15 | 2.1 |
| GB-080-10-D-0750 | <7' | 20 | 40 | 60 | 3 | 70 | M6 x 10 | 103.5 | 80 | 80 | 19 | 90 | M6 x 15 | 2.1 |
| GB-080-03-D-0024 | <7' | 20 | 40 | 60 | 3 | 70 | M6 x 10 | 93.5 | 80 | 80 | 8 | 66.7 | M4 x 10 | 2.1 |
| GB-080-05-D-0024 | <7' | 20 | 40 | 60 | 3 | 70 | M6 x 10 | 93.5 | 80 | 80 | 8 | 66.7 | M4 x 10 | 2.1 |
| GB-080-07-D-0024 | <7' | 20 | 40 | 60 | 3 | 70 | M6 x 10 | 93.5 | 80 | 80 | 8 | 66.7 | M4 x 10 | 2.1 |
| GB-080-10-D-0024 | <7' | 20 | 40 | 60 | 3 | 70 | M6 x 10 | 93.5 | 80 | 80 | 8 | 66.7 | M4 x 10 | 2.1 |
| GB-120-03-D-1000 | <7' | 25 | 55 | 80 | 4 | 100 | M10 x 16 | 136.5 | 130 | 115 | 24 | 145 | M8 x 18 | 6 |
| GB-120-05-D-1000 | <7' | 25 | 55 | 80 | 4 | 100 | M10 x 16 | 136.5 | 130 | 115 | 24 | 145 | M8 x 18 | 6 |
| GB-120-07-D-1000 | <7' | 25 | 55 | 80 | 4 | 100 | M10 x 16 | 136.5 | 130 | 115 | 24 | 145 | M8 x 18 | 6 |
| GB-120-10-D-1000 | <7' | 25 | 55 | 80 | 4 | 100 | M10 x 16 | 136.5 | 130 | 115 | 24 | 145 | M8 x 18 | 6 |

REDUCTEUR PLANETAIRE ANGULAIRE



| Mod. | RECU | $\varnothing_{DS}^{(h7)}$ | LS | $\varnothing_{DC}^{(h7)}$ | LC | \varnothing_{CC} | | EA | EB | EC | \varnothing_{DG} | \varnothing_{DM} | \varnothing_{CM} | TM x Prof. | Poid (kg) |
|------------------|------|---------------------------|----|---------------------------|----|--------------------|----------|-------|-----|-------|--------------------|--------------------|--------------------|------------|-----------|
| GB-040-03-A-0100 | <21' | 10 | 26 | 26 | 2 | 34 | M4 x 6 | 84 | 40 | 67 | 40 | 8 | 45 | M3 x 7 | 0.51 |
| GB-040-05-A-0100 | <21' | 10 | 26 | 26 | 2 | 34 | M4 x 6 | 84 | 40 | 67 | 40 | 8 | 45 | M3 x 7 | 0.51 |
| GB-040-07-A-0100 | <21' | 10 | 26 | 26 | 2 | 34 | M4 x 6 | 84 | 40 | 67 | 40 | 8 | 45 | M3 x 7 | 0.51 |
| GB-040-10-A-0100 | <21' | 10 | 26 | 26 | 2 | 34 | M4 x 6 | 84 | 40 | 67 | 40 | 8 | 45 | M3 x 7 | 0.51 |
| GB-040-03-A-0024 | <21' | 10 | 26 | 26 | 2 | 34 | M4 x 6 | 84 | 60 | 63 | 40 | 8 | 66.7 | M4 x 7 | 0.51 |
| GB-040-05-A-0024 | <21' | 10 | 26 | 26 | 2 | 34 | M4 x 6 | 84 | 60 | 63 | 40 | 8 | 66.7 | M4 x 7 | 0.51 |
| GB-040-07-A-0024 | <21' | 10 | 26 | 26 | 2 | 34 | M4 x 6 | 84 | 60 | 63 | 40 | 8 | 66.7 | M4 x 7 | 0.51 |
| GB-040-10-A-0024 | <21' | 10 | 26 | 26 | 2 | 34 | M4 x 6 | 84 | 60 | 63 | 40 | 8 | 66.7 | M4 x 7 | 0.51 |
| GB-060-03-A-0400 | <16' | 14 | 35 | 40 | 3 | 52 | M5 x 8 | 112 | 60 | 92.5 | 60 | 14 | 70 | M5 x 12 | 1.7 |
| GB-060-05-A-0400 | <16' | 14 | 35 | 40 | 3 | 52 | M5 x 8 | 112 | 60 | 92.5 | 60 | 14 | 70 | M5 x 12 | 1.7 |
| GB-060-07-A-0400 | <16' | 14 | 35 | 40 | 3 | 52 | M5 x 8 | 112 | 60 | 92.5 | 60 | 14 | 70 | M5 x 12 | 1.7 |
| GB-060-10-A-0400 | <16' | 14 | 35 | 40 | 3 | 52 | M5 x 8 | 112 | 60 | 92.5 | 60 | 14 | 70 | M5 x 12 | 1.7 |
| GB-060-03-A-0024 | <16' | 14 | 35 | 40 | 3 | 52 | M5 x 8 | 71 | 60 | 85.5 | 60 | 8 | 66.7 | M4 x 10 | 1.7 |
| GB-060-05-A-0024 | <16' | 14 | 35 | 40 | 3 | 52 | M5 x 8 | 71 | 60 | 85.5 | 60 | 8 | 66.7 | M4 x 10 | 1.7 |
| GB-060-07-A-0024 | <16' | 14 | 35 | 40 | 3 | 52 | M5 x 8 | 71 | 60 | 85.5 | 60 | 8 | 66.7 | M4 x 10 | 1.7 |
| GB-060-10-A-0024 | <16' | 14 | 35 | 40 | 3 | 52 | M5 x 8 | 71 | 60 | 85.5 | 60 | 8 | 66.7 | M4 x 10 | 1.7 |
| GB-080-03-A-0750 | <13' | 20 | 40 | 60 | 3 | 70 | M6 x 10 | 144 | 80 | 119.5 | 80 | 19 | 90 | M6 x 15 | 4.4 |
| GB-080-05-A-0750 | <13' | 20 | 40 | 60 | 3 | 70 | M6 x 10 | 144 | 80 | 119.5 | 80 | 19 | 90 | M6 x 15 | 4.4 |
| GB-080-07-A-0750 | <13' | 20 | 40 | 60 | 3 | 70 | M6 x 10 | 144 | 80 | 119.5 | 80 | 19 | 90 | M6 x 15 | 4.4 |
| GB-080-10-A-0750 | <13' | 20 | 40 | 60 | 3 | 70 | M6 x 10 | 144 | 80 | 119.5 | 80 | 19 | 90 | M6 x 15 | 4.4 |
| GB-080-03-A-0024 | <13' | 20 | 40 | 60 | 3 | 70 | M6 x 10 | 144 | 80 | 109.5 | 80 | 8 | 66.7 | M4 x 10 | 4.4 |
| GB-080-05-A-0024 | <13' | 20 | 40 | 60 | 3 | 70 | M6 x 10 | 144 | 80 | 109.5 | 80 | 8 | 66.7 | M4 x 10 | 4.4 |
| GB-080-07-A-0024 | <13' | 20 | 40 | 60 | 3 | 70 | M6 x 10 | 144 | 80 | 109.5 | 80 | 8 | 66.7 | M4 x 10 | 4.4 |
| GB-080-10-A-0024 | <13' | 20 | 40 | 60 | 3 | 70 | M6 x 10 | 144 | 80 | 109.5 | 80 | 8 | 66.7 | M4 x 10 | 4.4 |
| GB-120-03-A-1000 | <11' | 25 | 55 | 80 | 4 | 100 | M10 x 16 | 194.5 | 130 | 160.5 | 115 | 24 | 145 | M8 x 18 | 12 |
| GB-120-05-A-1000 | <11' | 25 | 55 | 80 | 4 | 100 | M10 x 16 | 194.5 | 130 | 160.5 | 115 | 24 | 145 | M8 x 18 | 12 |
| GB-120-07-A-1000 | <11' | 25 | 55 | 80 | 4 | 100 | M10 x 16 | 194.5 | 130 | 160.5 | 115 | 24 | 145 | M8 x 18 | 12 |
| GB-120-10-A-1000 | <11' | 25 | 55 | 80 | 4 | 100 | M10 x 16 | 194.5 | 130 | 160.5 | 115 | 24 | 145 | M8 x 18 | 12 |

REDUCTEUR PLANETAIRE SERIE GB