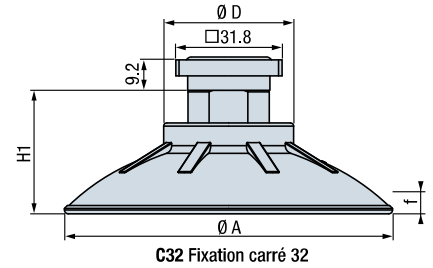
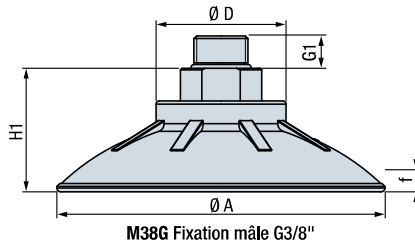
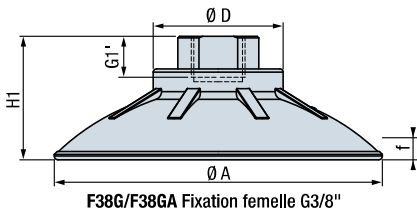
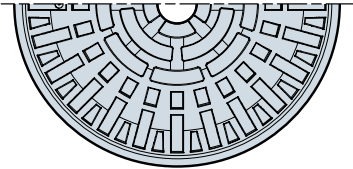
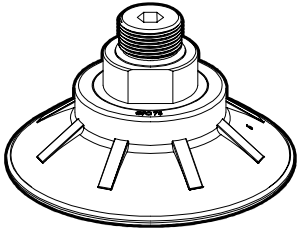


Ventouse plate CFC



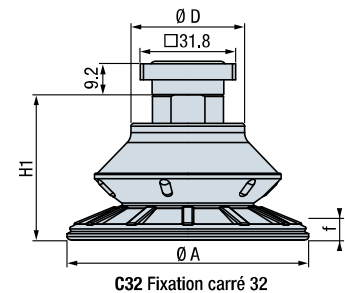
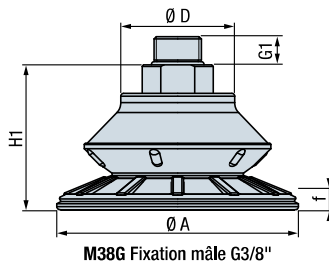
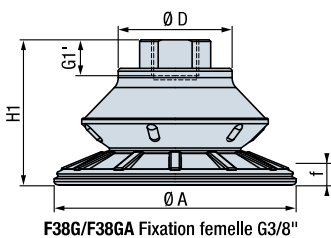
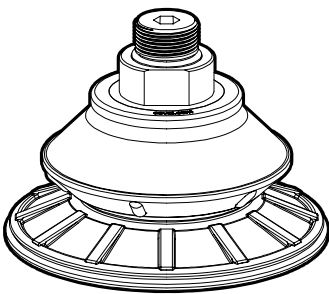
	Ø A repos (mm)	Ø A prise (mm)				R _{min} (mm)	R _{min} (mm)	Ø passage (mm)	serrage (mm)
CFC 35	37	38.5	2.46	50	50	58	50	6.3	plat 22 + hexa 6
CFC 50	51	54	8.37	100	100	66	52	6.3	plat 22 + hexa 6
CFC 75	76	80	25.03	200	170	100	58	6.3	plat 22 + hexa 6
CFC 100	101	105.7	57.61	350	270	120	90	6.3	plat 22 + hexa 6
CFC 125	127	132	119.7	550	480	160	115	6.3	plat 22 + hexa 8

	H1 (mm)	f ⁽²⁾ (mm)	G1 (mm)	G1' (mm)	Ø D (mm)	Ø (g)			
						F38G	F38GA	M38G	C32
CFC 35	25	3	10	12.6	37	14	25.7	18	36.2
CFC 50	30	5.5	10	12.6	38	25	34.9	29	47.2
CFC 75	33	8	10	12.6	41	40	48.9	45	62.2
CFC 100	38	10	10	12.6	41	67	75.3	72	89.2
CFC 125	44	14	10	12.6	55	119	146	124	141.2

(1) Force mesurée à 65 % sur tôle sèche, lisse et plane, sans coefficient de sécurité.

(2) f : flèche de la ventouse.

Ventouse 1,5 soufflet CBC



	Ø A repos (mm)	Ø A prise (mm)				R _{min} (mm)	R _{min} (mm)	Ø passage (mm)	serrage (mm)
CBC 22	21.5	22	1.6	17	17	25	30	6.3	plat 22 + hexa 6
CBC 30 ⁽³⁾	32	34	5	40	40	30	32	6.3	plat 22 + hexa 6
CBC 45	47	48.7	11.47	70	90	36	45	6.3	plat 22 + hexa 6
CBC 60	62	64.5	25.31	140	130	44	62	6.3	plat 22 + hexa 6
CBC 85	85	88	66.54	230	240	65	115	6.3	plat 22 + hexa 6
CBC 115	115	119	141.47	420	390	84	140	6.3	plat 22 + hexa 8

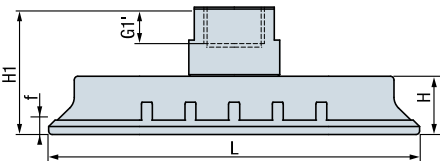
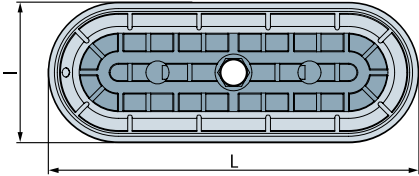
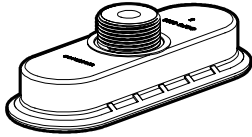
	H1 (mm)	f ⁽²⁾ (mm)	G1 (mm)	G1' (mm)	Ø D (mm)	Ø (g)			
						F38G	F38GA	M38G	C32
CBC 22	32	6	10	12.6	37	10	23	14	32.2
CBC 30 ⁽³⁾	31	8	10	12.6	37	14	26.3	19	36.2
CBC 45	36	11	10	12.6	37	22	31.5	26	44.2
CBC 60	41	14	10	12.6	39	32	42	37	54.2
CBC 85	51	22	10	12.6	41	64	71.2	69	86.2
CBC 115	53	24	10	12.6	55	103	131.1	107	125.2

(1) Force mesurée à 65 % sur tôle sèche, lisse et plane, sans coefficient de sécurité.

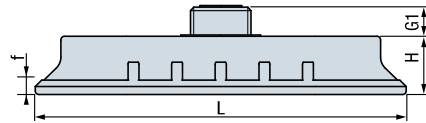
(2) f : flèche de la ventouse.

(3) modèle spécifique disponible avec fixation M 3/8G et passage Ø 9,5 mm : CBC30 M38G SP624

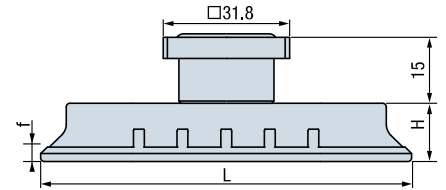
Ventouse oblongue plate COFC



F38G/F38GA Fixation femelle G3/8"



M38G Fixation mâle G3/8"



C32 Fixation carré 32

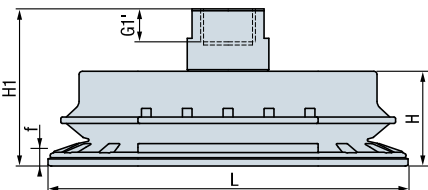
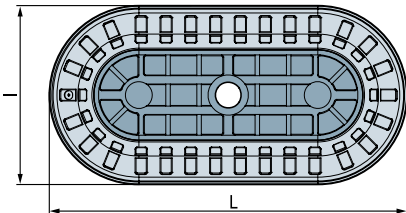
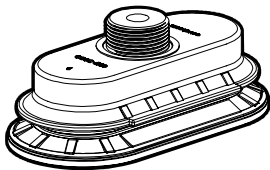
	Dim. repos (l x L mm)	Dim. prise (l x L mm)	(cm ³)	(N) ⁽¹⁾	(N) ⁽¹⁾	R _{min} (mm)	R _{min} (mm)	Ø passage (mm)	serrage (mm)
COFC 2565	25x65	26.8x67	3.78	70	70	25	25	6	hexa 6
COFC 3080	30x80	31.5x82	6.08	110	90	40	32	6	hexa 6
COFC 4080	40x80	42x82	11.03	140	120	60	40	6	hexa 6
COFC 50100	50x100	52.5x102.5	22.25	230	240	70	50	6	hexa 6

	H1 (mm)	H (mm)	G1 (mm)	G1' (mm)	f ⁽²⁾ (mm)	(g)			
						F38G	F38GA	M38G	C32
COFC 2565	31.5	12.5	8	10	3	24	35	17	35
COFC 3080	32	13	8	10	3	29	45	22	40
COFC 4080	34	15	8	10	4.5	30	45.5	23	41
COFC 50100	35	16	8	10	6	43	72.7	36	54

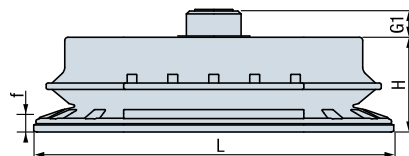
(1) Force mesurée à 65 % sur tôle sèche, lisse et plane, sans coefficient de sécurité.

(2) f : flèche de la ventouse.

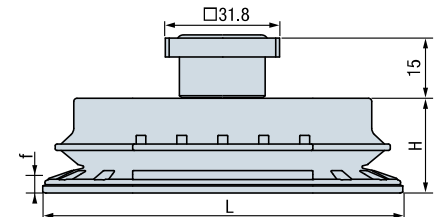
Ventouse oblongue 1,5 soufflet COBC



F38G/F38GA Fixation femelle G3/8"



M38G Fixation mâle G3/8"



C32 Fixation carré 32

	Dim. repos (l x L mm)	Dim. prise (l x L mm)	(cm ³)	(N) ⁽¹⁾	(N) ⁽¹⁾	R _{min} (mm)	R _{min} (mm)	Ø passage (mm)	serrage (mm)
COBC 3065	31x65	32.3x67	9.98	60	60	25	30	6	hexa 6
COBC 4080	40x80	41.5x82	19.44	110	120	38	37	6	hexa 6
COBC 55110	55x110	57x112.5	49.25	170	190	58	57	6	hexa 6
COBC 70140	70x140	72x143	93.57	300	300	72	68	6	hexa 6

	H1 (mm)	H (mm)	G1 (mm)	G1' (mm)	f ⁽²⁾ (mm)	(g)			
						F38G	F38GA	M38G	C32
COBC 3065	39	20	8	10	7	31	45.5	25	43
COBC 4080	41	22	8	10	9	37	53.1	31	49
COBC 55110	48	29	8	10	13	68	95.1	62	80
COBC 70140	49	30	8	10	16	103	121.4	97	115

(1) Force mesurée à 65 % sur tôle sèche, lisse et plane, sans coefficient de sécurité.

(2) f : flèche de la ventouse.

Pour commander

SÉRIE	DIMENSIONS	FIXATION
CBC	85	M38G

CFC
CBC
COFC
COBC

Se référer aux codes dans les tableaux de caractéristiques

M38G	fixation mâle G3/8" (Polyamide)
F38G	fixation femelle G3/8" (Polyamide)
F38GA	fixation femelle G3/8" (Aluminium)
C32	fixation par carré 32 (Aluminium)

EXEMPLE DE VENTOUSE STANDARD :

CBC 85 M38G

(ventouse Série C 1,5 soufflet, ø 85 mm, fixation mâle G3/8" polyamide).