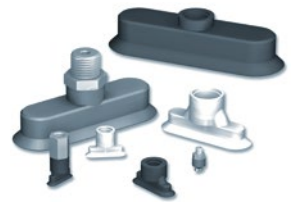


# VPO

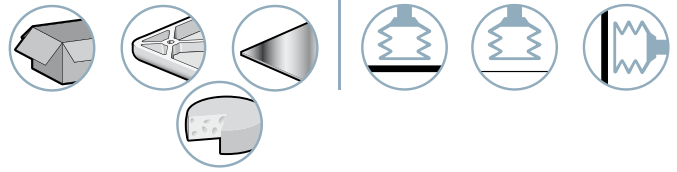
## Ventouses plates oblongues



Les ventouses plates oblongues série VPO sont utilisées dans le cadre de la manipulation de produits allongés (stylos, tubes, flacons, ampoules...), plats ou cylindriques.

Domaines d'activité

Cas d'emploi



Matières

**NBR** Nitrile    **STN** Siton®    **SI** Silicone

2  
VPO

### Caractéristiques ventouses

	I x L (mm)	V (cm <sup>3</sup> )	F (N) <sup>(1)</sup>	R <sub>min</sub> (mm)	NBR	SI	STN
VPO 24	2x4	0.004	0.2	1	VPO24NBR	VPO24SI	VPO24STN
VPO 357	3.5x7	0.019	0.5	3	VPO357NBR	VPO357SI	VPO357STN
VPO 515	5x15	0.036	1.7	4	VPO515NBR	VPO515SI	VPO515STN
VPO 618	6x18	0.058	2.4	4	VPO618NBR	VPO618SI	VPO618STN
VPO 824	8x24	0.138	4.3	8	VPO824NBR	VPO824SI	VPO824STN
VPO 1030	10x30	0.28	6.6	8	VPO1030NBR	VPO1030SI	VPO1030STN
VPO 1545	15x45	0.98	15.3	10	VPO1545NBR	VPO1545SI	VPO1545STN
VPO 2060	20x60	2.3	27.1	20	VPO2060NBR	VPO2060SI	VPO2060STN
VPO 2575	25x75	4.7	42.4	30	VPO2575NBR	VPO2575SI	VPO2575STN
VPO 3090	30x90	8.5	61	35	VPO3090NBR	VPO3090SI	VPO3090STN

(1) Force pratique de la ventouse avec un vide de 65% et un coefficient de sécurité de 2 inclus pour manipulation horizontale.

### Choix des inserts

	M3-M	M5-M	M5-F	G1/8"-M	G1/8"-F	G1/4"-M	G1/4"-F
24, 357	■	-	-	-	-	-	-
515, 618	-	■	■	-	-	-	-
824, 1030	-	-	-	■	■	-	-
1545... 3090	-	-	-	-	-	■	■

### Type de montage

**C** Version C : insert canule

Collier obligatoire à partir de la taille 8 x 24 pour empêcher une rotation involontaire pendant l'utilisation.

■ Combinaisons «ventouse + insert» disponibles : Voir références tableaux ci-dessous.

Fixation : M = mâle    F = femelle

### Références « ventouse + insert »

<b>2x4, 3.5x7</b>	FILETAGE	<b>M3-M</b>	
	VPO24NBR	VPO24NBRIMM3C	
	VPO24SI	VPO24SIIMM3C	
	VPO24STN	VPO24STNIMM3C	
	VPO357NBR	VPO357NBRIMM3C	
	VPO357SI	VPO357SIIMM3C	
	VPO357STN	VPO357STNIMM3C	
<b>5x15 - 6x18</b>	FILETAGE	<b>M5-M</b>	<b>M5-F</b>
	VPO515NBR	VPO515NBRIMM5C	VPO515NBRIFM5C
	VPO515SI	VPO515SIIMM5C	VPO515SIIFM5C
	VPO515STN	VPO515STNIMM5C	VPO515STNIFM5C
	VPO618NBR	VPO618NBRIMM5C	VPO618NBRIFM5C
	VPO618SI	VPO618SIIMM5C	VPO618SIIFM5C
	VPO618STN	VPO618STNIMM5C	VPO618STNIFM5C
<b>8x24 - 10x30</b>	FILETAGE	<b>G1/8"-M</b>	<b>G1/8"-F</b>
	VPO824NBR	VPO824NBRIM18C	VPO824NBRIF18C
	VPO824SI	VPO824SIIM18C	VPO824SIIF18C
	VPO824STN	VPO824STNIM18C	VPO824STNIF18C
	VPO1030NBR	VPO1030NBRIM18C	VPO1030NBRIF18C
	VPO1030SI	VPO1030SIIM18C	VPO1030SIIF18C
	VPO1030STN	VPO1030STNIM18C	VPO1030STNIF18C
<b>15x45 - 30x90</b>	FILETAGE	<b>G1/4"-M</b>	<b>G1/4"-F</b>
	VPO1545NBR	VPO1545NBRIM14C	VPO1545NBRIF14C
	VPO1545SI	VPO1545SIIM14C	VPO1545SIIF14C
	VPO1545STN	VPO1545STNIM14C	VPO1545STNIF14C
	VPO2060NBR	VPO2060NBRIM14C	VPO2060NBRIF14C
	VPO2060SI	VPO2060SIIM14C	VPO2060SIIF14C
	VPO2060STN	VPO2060STNIM14C	VPO2060STNIF14C
VPO2575NBR	VPO2575NBRIM14C	VPO2575NBRIF14C	
VPO2575SI	VPO2575SIIM14C	VPO2575SIIF14C	
VPO2575STN	VPO2575STNIM14C	VPO2575STNIF14C	
VPO3090NBR	VPO3090NBRIM14C	VPO3090NBRIF14C	
VPO3090SI	VPO3090SIIM14C	VPO3090SIIF14C	
VPO3090STN	VPO3090STNIM14C	VPO3090STNIF14C	

**Accessoires**  
Système ressort antirotation, voir page 4/6

Préciser référence : ex : VPO618NBRIFM5C  
Voir tableaux des références ci-dessus

# VPO

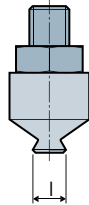
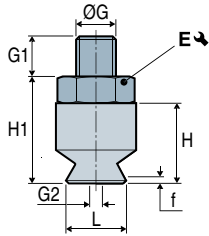
## Ventouses plates oblongues

Encombrements « ventouse + insert »



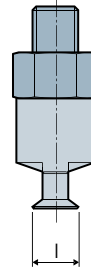
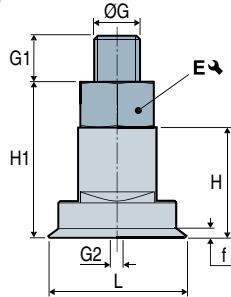
### VPO 2x4 - 3.5x7

1

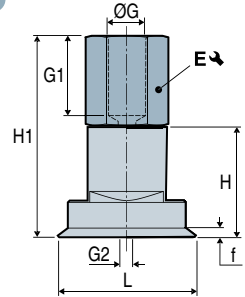


### VPO 5x15 - 6x18

2

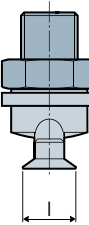
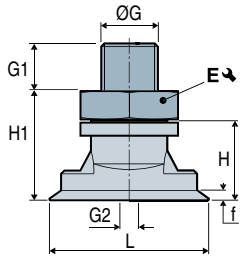


3

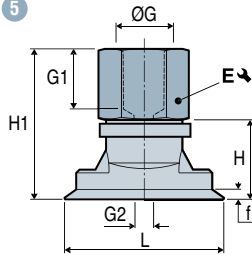


### VPO 8x24 - 10x30

4

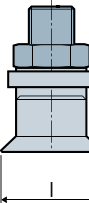
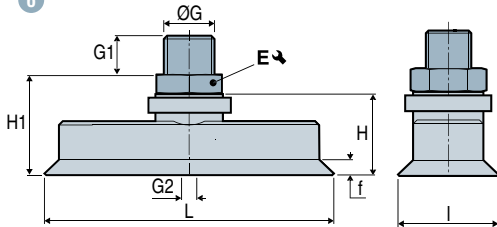


5



### VPO 15x45 - 20x60 - 25x75 - 30x90

6



7

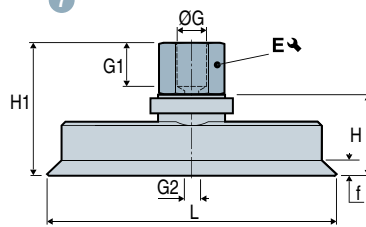


	Schéma	L	I	f <sup>(1)</sup>	H	H1	ØG	G1	ØG2 <sup>(2)</sup>	E ↘	⊖ (g)
VPO24---IMM3C	1	4	2	0.5	6	8	M3-M	3	1	5	0.4
VPO357---IMM3C	1	7	3.5	0.8	6	8	M3-M	3	1	5	0.3
VPO515---IMM5C	2	15	5	0.7	12	17	M5-M	5	2	8	1.8
VPO515---IFM5C	3	15	5	0.7	12	22	M5-F	8.5	2	8	1.8
VPO618---IMM5C	2	18	6	0.8	12	17	M5-M	5	2	8	1.8
VPO618---IFM5C	3	18	6	0.8	12	22	M5-F	8.5	2	8	1.8
VPO824---IM18C	4	24	8	1	12	17	G1/8"-M	8	3.5	14	6.6
VPO824---IF18C	5	24	8	1	12	25	G1/8"-F	9	3.5	14	7.3
VPO1030---IM18C	4	30	10	1.5	12	17	G1/8"-M	8	3.5	14	6.8
VPO1030---IF18C	5	30	10	1.5	12	25	G1/8"-F	9	3.5	14	7.5
VPO1545---IM14C	6	45	15	2	21	26	G1/4"-M	10	3.5	17	16.5
VPO1545---IF14C	7	45	15	2	21	36	G1/4"-F	12	3.5	17	16.5
VPO2060---IM14C	6	60	20	2.5	21	26	G1/4"-M	10	3.5	17	19.7
VPO2060---IF14C	7	60	20	2.5	21	36	G1/4"-F	12	3.5	17	19.7
VPO2575---IM14C	6	75	25	2.8	21	26	G1/4"-M	10	3.5	17	27.9
VPO2575---IF14C	7	75	25	2.8	21	36	G1/4"-F	12	3.5	17	27.9
VPO3090---IM14C	6	90	30	3.5	21	26	G1/4"-M	10	3.5	17	36.3
VPO3090---IF14C	7	90	30	3.5	21	36	G1/4"-F	12	3.5	17	36.3

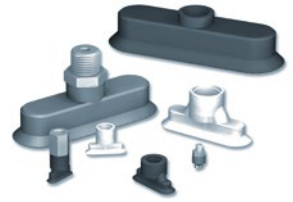
Note : toutes les cotes sont indiquées en mm

(1) f = Flèche de la ventouse. (2) Ø G2 = Ø de passage intérieur de l'insert.

# VPO

## Ventouses plates oblongues

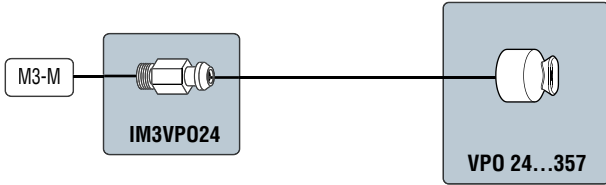
### Schémas de montage



2  
VPO

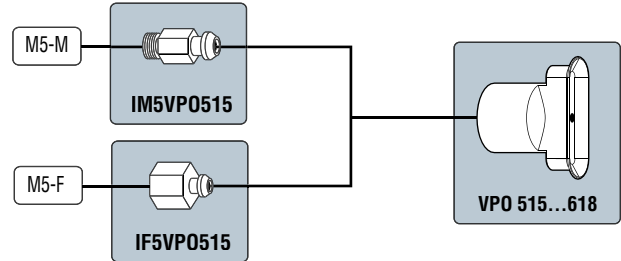
#### VPO 24 - 357

Inserts canules



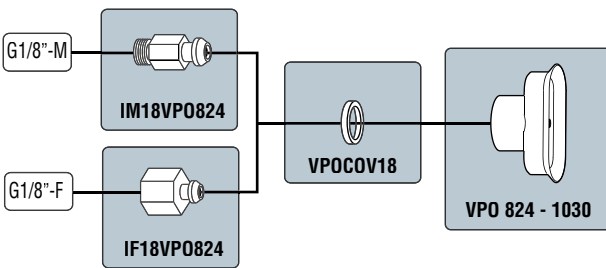
#### VPO 515 - 618

Inserts canules



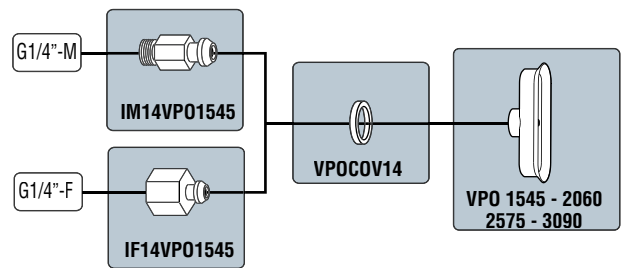
#### VPO 824 - 1030

Inserts canules



#### VPO 1545 - 2060 - 2575 - 3090

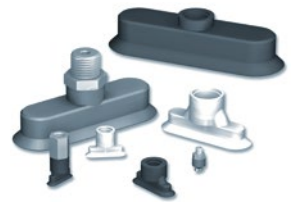
Inserts canules



# VPO

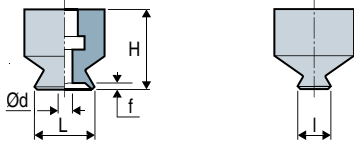
## Ventouses plates oblongues

### Encombremments

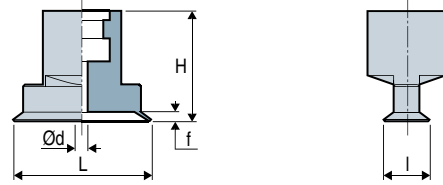


#### Encombremments ventouses

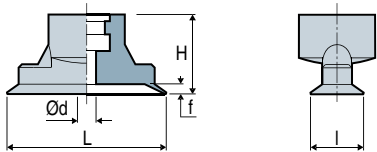
VPO 24 - 357



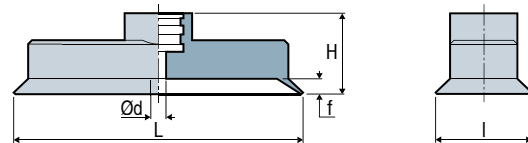
VPO 515 - 618



VPO 824 - 1030



VPO 1545 - 2060 - 2575 - 3090



2  
VPO

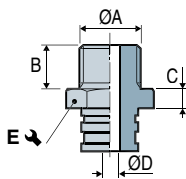
#### Ventouses

	L	l	Ø d	H	f (1)	(g)
VPO24	4	2	0.7	6	0.5	0.12
VPO357	7	3.5	1	6	0.8	0.15
VPO515	15	5	1.2	12	0.7	0.51
VPO618	18	6	1.5	12	0.8	0.53
VPO824	24	8	1.5	12	1	1.1
VPO1030	30	10	2.5	12	1.5	1.3
VPO1545	45	15	3	21	2	4.1
VPO2060	60	20	4	21	2.5	7.3
VPO2575	75	25	4	21	2.8	15.5
VPO3090	90	30	4	21	3.5	23.9

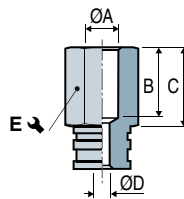
(1) f = Flèche de la ventouse.

#### Inserts canules

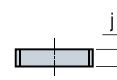
Mâle - IM



Femelle - IF



Collier



	ØA	B	C	ØD	E	j	Matière	(g)
IM3VP024	M3-M	3	2	1	5	-	Aluminium	0.2
IM5VP0515	M5-M	5	5	2	8	-	Aluminium	1.3
IM18VP0824	G1/8"-M	8	5	3.5	14	-	Aluminium	3.9
IM14VP01545	G1/4"-M	10	5	3.5	17	-	Aluminium	9.7
IF5VP0515	M5-F	8.5	10	2	8	-	Aluminium	1.3
IF18VP0824	G1/8"-F	9	13	3.5	14	-	Aluminium	4.6
IF14VP01545	G1/4"-F	12	15	3.5	17	-	Aluminium	9.7
VPO COV18	-	-	-	-	-	4	Aluminium	1.6
VPO COV14	-	-	-	-	-	4	Aluminium	2.7

Les valeurs sont représentatives des caractéristiques moyennes de nos produits. (1) f = Flèche de la ventouse.

Note : toutes les côtes sont indiquées en mm