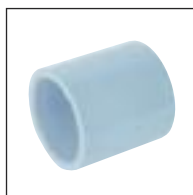


Index to Air-Line Xtra Imperial Fittings

Note: Two-dimensional Auto-CAD drawings are available on www.durapipe.co.uk



Pipe (plain)
page 26



Sockets
page 26



Reducing bushes
page 26



Reducers
page 27



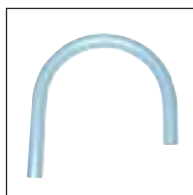
Elbows 45°
page 27



Elbows 90°
page 27



Bends 90°
page 27



Dropper bends 180°
page 28



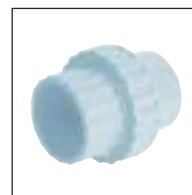
Tees 90° equal
page 28



Tees 90° reducing
page 28



End caps
page 28



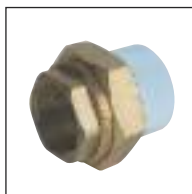
Socket unions
page 29



Plain/Threaded sockets
page 29



Female threaded
adaptors
page 29



Female composite
unions
page 29



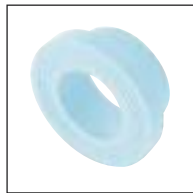
Male composite unions
page 30



Wall brackets
page 30



Wall brackets -
Multiport
page 30



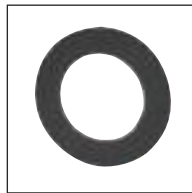
Flanges stub
page 30



Flanges blanking
page 31



Backing rings
page 31



Gaskets flat
page 31



Flange assembly kits
page 31



Valve support plates
page 31

Valves



VKD Double union
ball valves
page 32



FK Butterfly valves
page 32



VM Diaphragm valves
page 32

Accessories



Cobra pipe clips
page 33



Air-Line Xtra solvent
cement
page 33



Eco cleaner
page 33

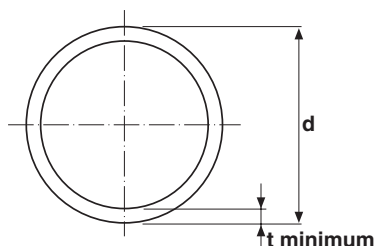


Chamfering and
de-burring tools
page 33



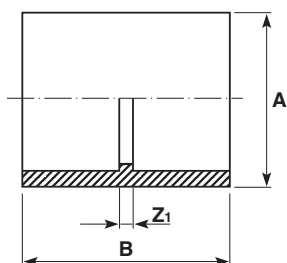
Pipe cutters
page 33

Pipe PN12.5



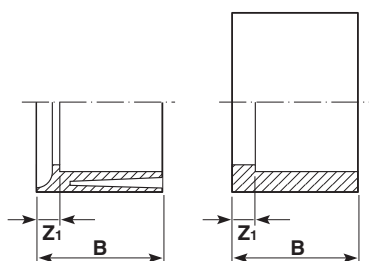
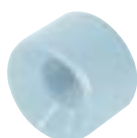
Size d_1	t	kg/m	SL	Code
16	1.9	0.10	5	31 557 305
20	2.1	0.13	5	31 557 306
25	2.4	0.18	5	31 557 307
32	2.9	0.28	5	31 557 308
40	3.6	0.46	5	31 557 309
50	4.5	0.69	5	31 557 310
63	5.7	1.09	5	31 557 311
75	6.7	1.54	5	31 557 312
90	8.0	2.23	5	31 557 313
110	9.9	3.31	5	31 557 314

Sockets Plain



Size	A	B	Z ₁	gms	Code
16	21	31	3	5	31 100 305
20	25	36	3	7	31 100 306
25	31	41	3	12	31 100 307
32	40	48	3	25	31 100 308
40	50	58	3	45	31 100 309
50	62	68	3	77	31 100 310
63	78	81	3	154	31 100 311
75	93	93	3	230	31 100 312
90	111	110	4	380	31 100 313
110	136	132	6	690	31 100 314

Reducing bushes Plain

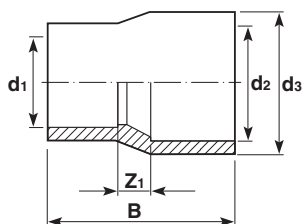


Size	B	Z ₁	gms	Code
20-16	17	3	2	31 109 412
25-20	19	3	4	31 109 415
32-16	23	9	5	31 109 417
32-25	23	4	6	31 109 419
40-32	27	5	13	31 109 423
50-20*	32	16	32	31 109 424
50-25*	32	13	29	31 109 425
50-32	32	10	19	31 109 426
50-40	32	5	25	31 109 427
63-25*	38	19	60	31 109 429
63-32*	39	16	36	31 109 430
63-50	39	7	47	31 109 432
75-63	45	7	65	31 109 438
90-50*	53	7	200	31 109 442
90-63*	54	15	224	31 109 443
90-75	54	8	110	31 109 444
110-63*	64	25	252	31 109 449
110-90	64	10	200	31 109 451

*Configuration shown in inset.

For an example of the use of reducing bushes see page 21.

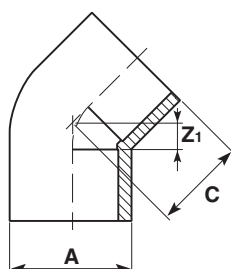
Reducers Plain/spigot



d ₃	d ₂	d ₁	B	Z ₁	gms	Code
25-	20-	16	37	6	6	31 114 412
32-	25-	20	42	6	12	31 114 415
40-	32-	25	50	8	22	31 114 419
50-	40-	32	60	10	39	31 114 423
63-	50-	40	71	12	80	31 114 427
75-	63-	50	85	14	108	31 114 432
90-	75-	63	97	13	190	31 114 438
110-	90-	75	114	15	350	31 114 444

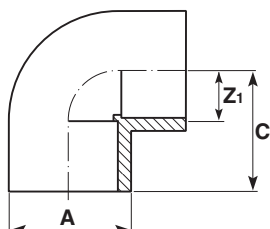
For an example of the use of reducers see page 21.

Elbows 45° Plain



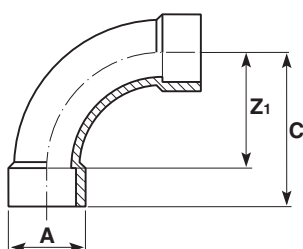
Size	A	C	Z ₁	gms	Code
16	21	19	5	5	31 119 305
20	25	22	6	7	31 119 306
25	31	26	7	14	31 119 307
32	40	31	8	27	31 119 308
40	50	38	10	54	31 119 309
50	62	45	13	100	31 119 310
63	78	54	15	180	31 119 311
75	93	64	18	300	31 119 312
90	112	76	23	550	31 119 313
110	136	90	26	950	31 119 314

Elbows 90° Plain



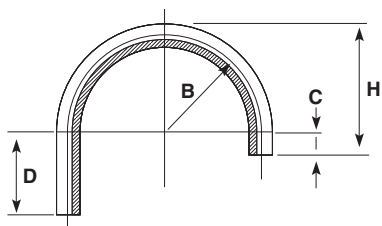
Size	A	C	Z ₁	gms	Code
16	21	24	10	6	31 115 305
20	25	28	12	10	31 115 306
25	31	33	14	17	31 115 307
32	40	40	18	35	31 115 308
40	50	49	22	68	31 115 309
50	62	60	27	129	31 115 310
63	78	73	34	230	31 115 311
75	93	86	40	385	31 115 312
90	111	102	49	690	31 115 313
110	136	124	60	1220	31 115 314

Bends 90° Short radius



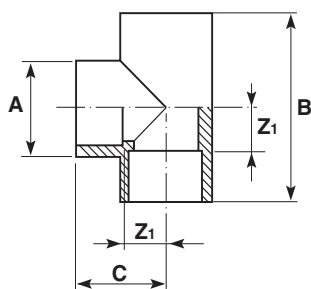
Size	A	C	Z ₁	gms	Code
16	21	47	32	12	31 118 305
20	26	57	40	18	31 118 306
25	33	69	50	38	31 118 307
32	41	87	64	75	31 118 308
40	51	107	80	135	31 118 309
50	62	132	100	245	31 118 310
63	78	165	126	470	31 118 311
75	93	195	150	810	31 118 312
90	111	234	180	1350	31 118 313
110	140	284	220	2570	31 118 314

Dropper bends 180° Plain



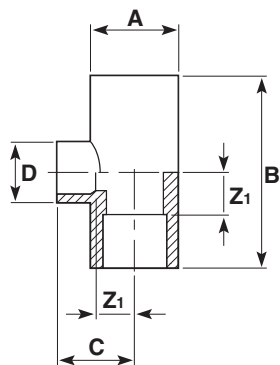
Size	B	C	D	H	Dev length	gms	Code
16	64.0	17.0	90.0	73.0	308	20	31 312 305
20	70.0	20.0	90.0	80.0	329	28	31 312 306
25	75.0	23.0	90.0	85.5	348	36	31 312 307
32	96.0	26.0	160.0	144.0	487.6	136	31 312 308

Tees 90° Equal



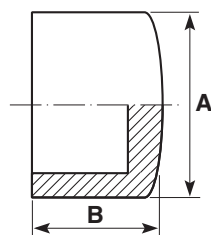
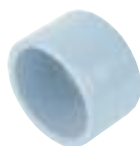
Size	A	B	C	Z ₁	gms	Code
16	21	47	24	10	7	31 122 305
20	25	56	28	12	12	31 122 306
25	31	67	33	14	24	31 122 307
32	40	81	41	18	48	31 122 308
40	50	98	49	22	87	31 122 309
50	62	119	60	27	160	31 122 310
63	78	146	73	34	300	31 122 311
75	93	172	86	40	510	31 122 312
90	111	204	102	49	900	31 122 313
110	136	248	124	60	1650	31 122 314

Tees 90° Reducing



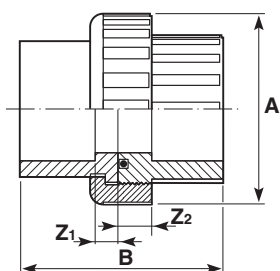
Size	A	B	C	D	Z ₁	gms	Code
20-16	25	56	26	21	12	12	31 124 412
25-16	31	67	28	21	14	22	31 124 414
25-20	31	67	31	25	14	22	31 124 415
32-16	40	81	32	21	18	40	31 124 417
32-20	40	81	35	25	18	40	31 124 418
32-25	40	81	37	31	18	41	31 124 419
40-20	50	98	39	25	22	72	31 124 421
40-25	50	98	41	31	22	72	31 124 422
40-32	50	98	45	40	22	74	31 124 423
50-20	62	119	44	29	27	140	31 124 424
50-25	62	119	46	31	27	140	31 124 425
50-32	62	119	50	40	27	140	31 124 426
63-25	78	146	53	31	34	250	31 124 429
63-32	78	146	57	40	34	250	31 124 430
63-50	78	146	67	62	34	270	31 124 432

End caps Plain



Size	A	B	gms	Code
16	21	17	3	31 149 305
20	25	21	5	31 149 306
25	32	24	8	31 149 307
32	41	29	19	31 149 308
40	50	35	30	31 149 309
50	62	41	53	31 149 310
63	78	50	106	31 149 311

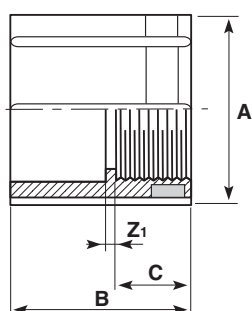
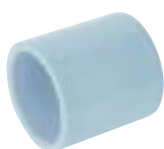
Socket unions Plain



Size	A	B	Z ₁	Z ₂	gms	Code
16	33	42	3	10	19	31 205 305
20	41	47	3	10	29	31 205 306
25	50	53	3	10	46	31 205 307
32	57	64	9	10	70	31 205 308
40	72	78	10	12	140	31 205 309
50	80	92	12	14	154	31 205 310
63	102	112	14	18	270	31 205 311

O-Ring gasket EPDM rubber, (13209) as standard. Viton (FPM) O-Rings for conversion are available (13211).

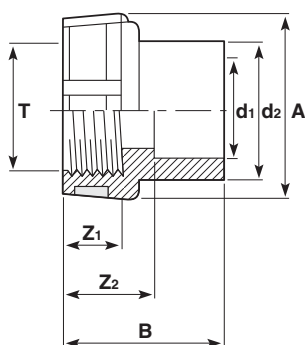
Sockets Plain/BSP taper female threaded, reinforced



Size	A	B	C	Z ₁	gms	Code
20 x 1/2*	28	36	16	4	12	31 101 306
25 x 3/4*	36	40	18	4	19	31 101 307
32 x 1*	43	47	21	4	40	31 101 308

*Threaded size designation.

Female threaded adaptors BSP taper female threaded reinforcing band

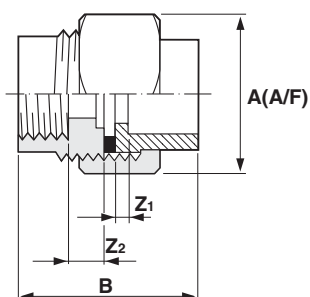


Size	d ₂	d ₁	T*	A	B	Z ₁	Z ₂	gms	Code
16-12-	3/8			23	28	11	16	7	31 153 331
20-16-	1/2			28	34	15	20	14	31 153 333
25-20-	3/4			35	39	16	22	21	31 153 335
32-25-	1			44	46	19	26	42	31 153 337
40-32-	1 1/4			55	54	21	31	69	31 153 339
50-40-	1 1/2			63	60	21	32	108	31 153 341
63-50-	2			78	72	26	39	169	31 153 343

*Thread size designation. For spigot and socket jointing.

For an example of the use of female threaded adaptors see page 21.

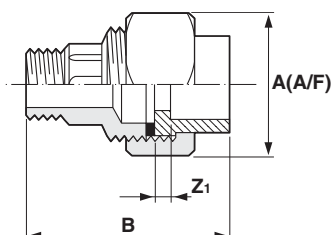
Female composite unions ABS/brass, BSP parallel female thread



Size	A	B	Z ₁	Z ₂	gms	Code
16 x 3/8*	32	37	3	9	100	31 216 305
20 x 1/2*	40	42	3	9	165	31 216 306
25 x 3/4*	48	48	3	10	250	31 216 307
32 x 1*	55	59	9	31	310	31 216 308
40 x 1 1/4*	65	68	10	11	450	31 216 309
50 x 1 1/2*	78	76	12	12	800	31 216 310
63 x 2*	88	90	14	14	950	31 216 311

*Thread sizes designation. Brass retaining nut & EPDM rubber seal.

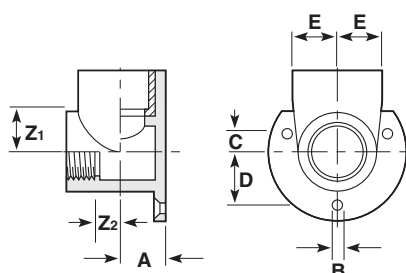
Male composite unions ABS/brass, BSP taper male thread



Size	A	B	Z ₁	gms	Code
16 x 3/8*	32	48	3	105	31 217 305
20 x 1/2*	40	54	3	175	31 217 306
25 x 3/4*	48	74	3	320	31 217 307
32 x 1*	55	86	8	420	31 217 308
40 x 1 1/4*	65	93	10	620	31 217 309
50 x 1 1/2*	78	109	12	1000	31 217 310
63 x 2*	88	125	14	1200	31 217 311

*Thread sizes designation. Brass retaining nut & EPDM rubber seal.

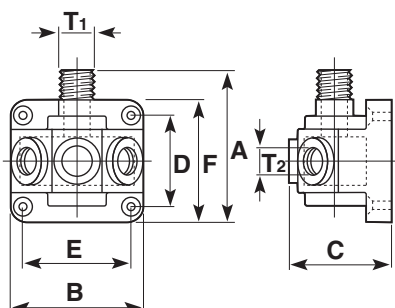
Wall brackets ABS/brass body



Size	A	B	C	D	E	Z ₁	Z ₂	gms	Code
16-3/8*	15	4.5	6	19	18.0	17	9	180	31 422 326
20-1/2*	16.5	4.5	6	19	19.5	18	9	185	31 422 327
25-1/2*	20	4.5	5	24	22.5	19	11	215	31 422 328
25-3/4*	20	4.5	5	24	22.5	19	11	200	31 422 329

*Thread sizes designation. Bolt/Screw size M5/2BA/No.10.

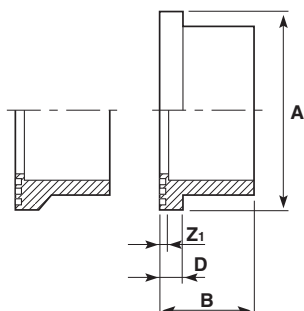
Wall brackets Multiport, aluminium



Size	A	B	C	D	E	F	T ₁ BSP	T ₂ BSP	gms	Code
3/4 x 1/2	76	84	94	56	65	56	3/4	1/2	330	31 429 122

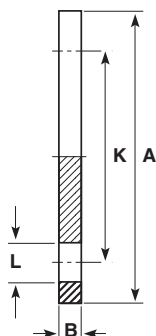
Bolt/Screw size M5/2BA/No.10.

Flanges stub Serrated face



Size	A	B	D	Z ₁	gms	Code
32	50	29	10	6	19	31 135 308
40	61	35	8	3	36	31 135 309
50	73	40	8	3	60	31 135 310
63	90	47	14	8	100	31 135 311
75	106	53	15	8	150	31 135 312
90	125	64	16	10	240	31 135 313
110	150	75	18	11	370	31 135 314

Flanges blanking Plain/drilled

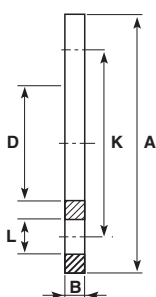


BS 4504: 16/3 (DIN 2501 16 bar/PN16)

No. Size	A	B	K	L	No. Holes	gms	Code
32	115	13	85	14	4	139	11 323 308
40	140	13	100	18	4	204	11 323 309
50	150	13	110	18	4	237	11 323 310
63	165	20	125	18	4	447	11 323 311
75	185	20	145	18	4	568	11 323 312
90	200	20	160	18	8	645	11 323 313
110	210	20	180	18	8	715	11 323 314

Blanking flanges are manufactured from grey ABS and must be used with the appropriate backing ring.

Backing rings Galvanised mild steel. Drilled to DIN 2501: Sheet 1: 1972 (BS4504: Section 1: 1989 Table II)



BS 4504: 16/3 (DIN 2501 16 bar/PN16)

No. Size	A	B	K	L	No. Holes	gms	Code
32	115	6	85	14	4	394	13 421 308
40	140	6	100	18	4	579	13 421 309
50	150	6	110	18	4	641	13 421 310
63	165	8	125	18	4	976	13 421 311
75	185	8	145	18	4	1204	13 421 312
90	200	8	160	18	8	1245	13 421 313
110	220	8	180	18	8	1383	13 421 314

Gaskets flat Stub flange EPDM



Size	A	B	gms	Code
32	50	2	4	13 411 308
40	71	2	4	13 411 309
50	73	2	7	13 411 310
63	90	3	10	13 411 311
75	106	3	20	13 411 312
90	125	3	30	13 411 313
110	150	4	40	13 411 314

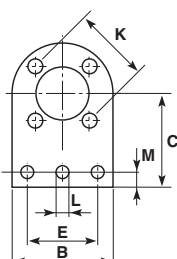
Flange assembly kits



Pre-packed flange assembly kits consist of an Air-Line Xtra stub flange, galvanised mild steel backing ring and gasket together on one code. Ordering these products guarantees a correct fit between components. See the Industrial Price List for further details.

Size	Code
32	31 364 308
40	31 364 309
50	31 364 310
63	31 364 311
75	31 364 312
90	31 364 313
110	31 364 314

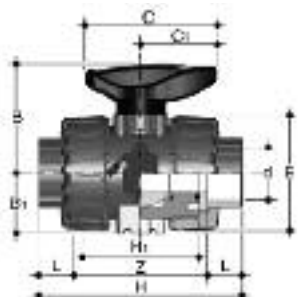
Valve support plates Galvanised mild steel. Drilled to DIN 2501: Sheet 1: 1972 (BS4504: Section 1: 1989 Table II)



Size	B	C	E	K	L	M	N	No. Holes	gms	Code
32	115	98	76	85	14	16	2	4	860	31 459 308
50	150	127	100	110	18	22	2	4	1480	31 459 310
63	165	134	100	125	18	22	2	4	2100	31 459 311
75	185	143	126	145	18	22	2	4	2500	31 459 312
90	200	150	126	160	18	22	2	8	2660	31 459 313
110	220	159	152	180	18	22	3	8	2960	31 459 314

Valves

VKD Double union ball valves Manual – Plain sockets with EPDM seals



d	DN	PN	L	Z	H	E	B	C	Weight gms	Code
16	10	16	14	75	103	55	49	66	200	HO DKA 305
20	15	16	16	71	103	55	49	66	195	HO DKA 306
25	20	16	19	77	115	66	59	75	310	HO DKA 307
32	25	16	22	84	128	75	66	85	440	HO DKA 308
40	32	16	26	94	146	87	75	97	645	HO DKA 309
50	40	16	31	102	164	100	87	110	880	HO DKA 310
63	50	16	38	123	199	122	101	134	1490	HO DKA 311

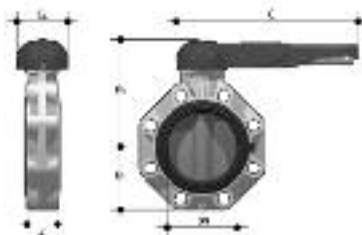
Options:

FPM seals (plain ends) order HO DKB ***

For threaded versions refer to Imperial Valves section.

Manual valves can be supplied with locking kits - further information is available from our Valve Department.

FK Butterfly valves Glass reinforced polypropylene with ABS disc



lever operated

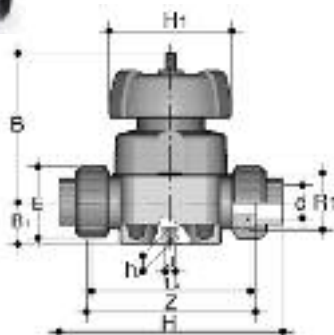
d	DN	PN	B ₂	B ₃	C	C ₁	gms	U	Z	Code
50	40	16	60	137	175	100	900	4	33	HO FKA 106
63	50	16	70	143	175	100	1080	4	43	HO FKA 107
75	65	10	80	164	272	110	1470	4	46	HO FKA 108
90	80	10	93	178	272	110	1870	8	49	HO FKA 109
110	100	10	107	192	272	110	2220	8	56	HO FKA 110

U = No. of holes

Options:

FPM seals order HO FKB***

VM Diaphragm valves Manual – plain spigot ends, Nitrile diaphragm



d	DN	PN	B	B ₁	H	h	H ₁	J	L	gms	Code
20	15	10	95	26	124	12	90	M6	16	700	HO UMA 306
25	20	10	95	26	144	12	90	M6	19	700	HO UMA 307
32	25	10	95	26	154	12	90	M6	23	700	HO UMA 308
40	32	10	126	40	174	18	115	M8	27	1500	HO UMA 309
50	40	10	126	40	194	18	115	M8	32	1500	HO UMA 310
63	50	10	148	40	224	18	140	M8	39	2400	HO UMA 311
75	65	10	225	55	284	23	215	M12	44	7000	HO VMA 412
90	80	10	225	55	300	23	215	M12	51	7000	HO VMA 413
110	100	10	295	69	350	23	250	M12	61	10500	HO VMA 414

Options:

FPM diaphragm order HO VMB***

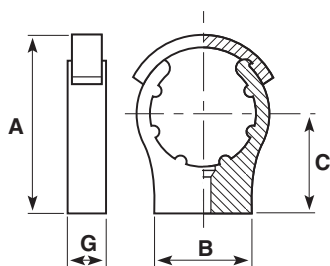
PTFE diaphragm order HO VMC***

Manual Valves can be supplied with locking kits - further information is available from our Valve Department.

*Note: 75mm, 90mm and 110mm are spigot ended.

Accessories

Cobra pipe clips



Size	A	B	C	G	Bolt/screw size	gms	Code
*16	–	35	25	16	M4/3BA/No 8	7	13 434 305
*20	–	35	30	16	M5/1BA/No 10	8	13 434 306
*25	–	35	35	17	M5/1BA/No 10	11	13 434 307
32	–	40	40	17	M5/1BA/No 10	14	13 434 308
40	–	45	45	20	M5/1BA/No 10	21	13 434 309
50	85	50	50	21	M6/0BA/No 10	30	13 434 310
63	102	60	60	21	M6/0BA/No 10	42	13 434 311
75	122	70	70	31	M8	94	13 434 312
90	148	80	90	31	M8	121	13 434 313
110	171	90	96	35	M8	185	13 434 314

*Without retaining clip. Bolts/screws not supplied.

Air-Line Xtra solvent cement



ML	Code
500	31 464 395

Note: Use only Durapipe Air-Line Xtra solvent cement for jointing the Durapipe Air-Line Xtra system.

Eco cleaner



Litres	Code
0.5	03 463 395

Chamfering and de-burring tools



Description	Product code
$\frac{3}{8}$ " to 1" pipe inner and outer milling cutter tool	FT 55 72 90
$\frac{3}{8}$ " to 2" pipe inner and outer milling cutter tool	FT 55 65 12
$\frac{3}{4}$ " to 6" chamfering tool	FT 55 05 10

Pipe cutters



Description	Product code
$\frac{3}{8}$ " to 2" pipe cutter	FT 80 00 01
1 $\frac{1}{2}$ " to 4" pipe cutter	FT 80 00 03
$\frac{3}{8}$ " to 2" spare cutter wheel	FT 80 00 02
1 $\frac{1}{2}$ " to 4" spare cutter wheel	FT 80 00 04