



RX08

DIAPHRAGM VALVE

- 100% Helium Leak Test performed
- Assembling, testing & Packaging in cleanroom: Class ISO 4
- Reverse seat design for high life cycle
- Individual serial number for full traceability
- Electropolished surface roughness per SEMI F19 UHP Grade
- Fluid specific seat material as standard options
- Low internal volume
- 316L VAR® stainless steel double melt per SEMI F20 option available
- Additional Multi-port options
- 270° multiturn handwheel with open/close indicator
- Loto option
- Pneumatic version available
- Indicative switch option

RX08 | HIGH PERFORMANCE UHP LINE VALVES

SPECIFICATIONS

| | | |
|---|--|---|
| Max. inlet pressure See table next page | Pneumatic actuator opening pressure 5 to 7 bar (73 to 102 psig)* | Certified max. Helium outboard leak rate $\leq 1 \times 10^{-9}$ mbar.l/s |
| Temperature range See table next page | Nominal seat diameter 8 mm (0.31") | Certified max. Helium across the seat leak rate (at max. pressure) $\leq 1 \times 10^{-9}$ mbar.l/s |
| Wetted volume $< 1.6 \text{ cm}^3$ | Flow capacity (Cv) 0.5 | Certified max. Helium inboard leak rate (at max. pressure) $\leq 1 \times 10^{-9}$ mbar.l/s |
| Burst pressure $> 700 \text{ bar (10152 psig)}$ | | |

CONSTRUCTION MATERIAL

| | Parts | Material |
|-------------------------|------------------|--------------------------------|
| Wetted parts | Body | SS 316L, VAR |
| | Seat | PCTFE, PVDF, VESPEL® |
| | Diaphragm | Phynox® |
| Non-wetted parts | Backup diaphragm | Phynox® |
| | Handwheel | Aluminium (QT) or Plastic (MT) |
| | Actuator Body | SS 316L or Aluminium |
| | Others | Stainless Steel, Alloys, brass |

SURFACE FINISH

| | |
|----------|---|
| S | Ra 0.4 μm (15 μin) |
| V | Ra 0.25 μm EP (10 μin) |

VALVE VERSION / MAX. WORKING PRESSURE

| Valve | Max. working pressure |
|---|-----------------------|
| RX08 (LM) Multiturn handwheel ^{1 2} | 20 bar |
| RX08 (HM) Multiturn handwheel ^{1 2} | 240 bar |
| RX08 (LQ) Quarter turn handwheel ¹ | 20 bar |
| RX08 (HQ) Quarter turn handwheel ¹ | 240 bar |
| RX08 (LP) Pneumatically actuated | 20 bar |
| RX08 (HP) Pneumatically actuated ³ | 240 bar |

¹ FT (Panel Mounting) option available

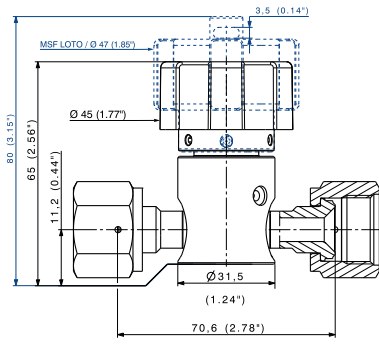
² MSF LOTO option available

³ Position indication switch available

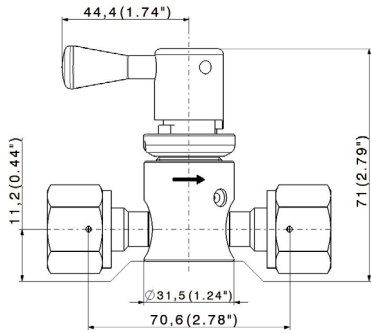
TEMPERATURE RANGE

| Seat (Actuation type) | Temperature Range |
|------------------------------------|-----------------------------------|
| PCTFE / PVDF (manual & pneumatic*) | -40°C to +65°C (-40°F to +149°F) |
| VespeL® (manual & pneumatic*) | -40°C to +150°C (-40°F to +302°F) |
| *-20C° pneumatic versions | |

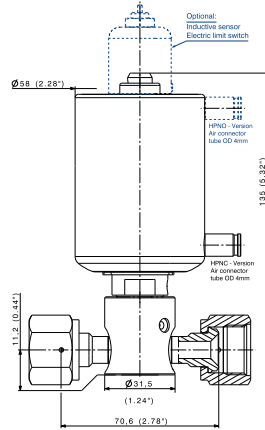
RX08 - MULTI-TURN VALVE (LM, HM, MSF)



RX08 - QUARTER TURN VALVE (LQ, HQ)

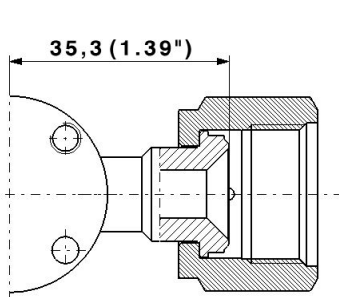
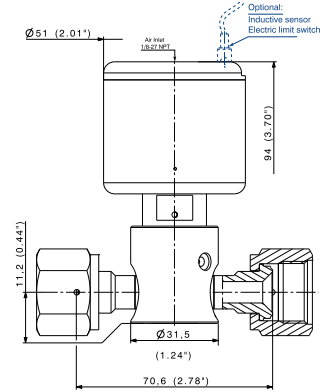


RX08 - PNEUMATIC VALVE HIGH PRESSURE (HPNC, HPNO)

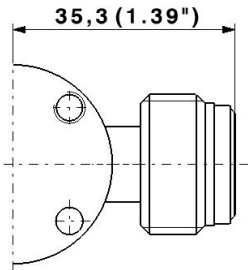


RX08 - BOTTOM VIEW

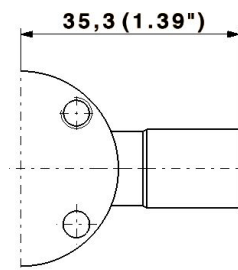
RX08 - PNEUMATIC VALVE (LPNC, LPNO)



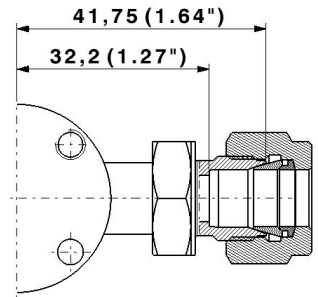
Female (face seal)
Swivel



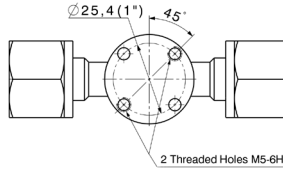
Male (face seal)
non-Swivel



BWO for
micro-welding head



Compression tube fittings



OPEN/CLOSE INDICATOR



Green - Open
Red - Closed

| | Surface Finish | | Max. Delivery Pressure | | Porting Configuration ¹ | | Body Material | | Seat Material | | End Connection | | Options | |
|------|------------------------|---|----------------------------------|-----|------------------------------------|------|---------------|---|----------------|---|--|---------|--------------------------|-----|
| RX08 | S | | BP | | 2W1 | | - | | K | | A/B: B3/8 | | | |
| | Ra 0.4 µm (15 µin) | S | Multi-Turn Handwheel (20bar) | LM | 2W1 | 2W1 | SS 316L | - | PCTFE (Kel-F®) | K | Metal face seal 3/8" - Female | V 3/8 F | Panel Mounting | FT |
| | Ra 0.25 µm EP (10 µin) | V | Multi-Turn Handwheel (240bar) | HM | 2W2 | 2W2 | Hastelloy®** | H | PI (Vespel®) | V | Metal face seal 3/8" - Male non-Swivel | V 3/8 M | Electric limit switch*** | CI |
| | | | Pneumatically actuated (20 bar) | LP* | 3W4 | 3W4 | VAR** | A | PVDF | P | BWO 1/2" | B 1/2 | LOTO | MSF |
| | | | Pneumatically actuated (240 bar) | HP* | 3W5 | 3W5 | | | | | BWO 3/8" mm | B 3/8 | Constant bleed | FPT |
| | | | Quarter-Turn Handwheel (20 bar) | LQ | 3W6 | 3W6 | | | | | BWO 10 mm | B 10 | | |
| | | | Quarter-Turn Handwheel (240 bar) | HQ | 3W8 | 3W8 | | | | | BWO 12 mm | B 12 | | |
| | | | | | 3W9 | 3W9 | | | | | Compression tube fittings | RDB 3/8 | | |
| | | | | | 4W10 | 4W10 | | | | | Compression tube fittings | RDB 1/2 | | |
| | | | | | 4W11 | 4W11 | | | | | Compression tube fittings | RDB 10 | | |
| | | | | | | | | | | | Compression tube fittings | RDB 12 | | |

¹ Check configurations here

* Add NO for normally open or NC for normally closed

** On demand
